



CHATTERTON | REES

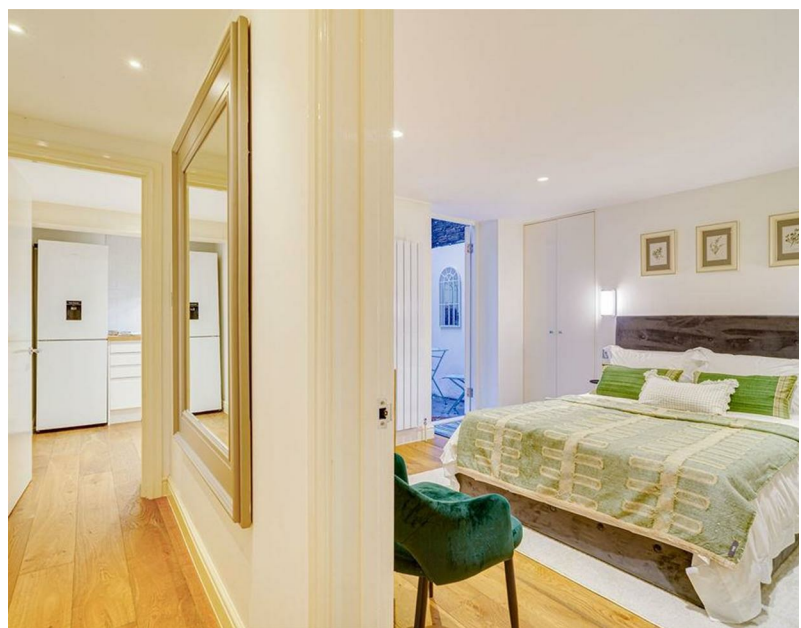


121a Cheyne Walk

, London, SW10 0ES

Asking price £500,000





Description

A refurbished flat in the heart of Chelsea with its own entrance. This property comprises off a large reception room with lots of natural light as you enter, a separate kitchen, and a good sized bedroom with an ensuite shower room plus a separate w/c plus a private patio. Cheyne Walk is an iconic road situated along the river Thames in Chelsea and is in close proximity to the shops and amenities of the King's Road and Fulham Road.

Benefiting from A share of freehold and a long underlying lease, spanning just shy of 600sqft and set just back from the River Thames, This is a great option for any first-time buyer, pied à terre or buy to let.

- One Bedroom
- Own Entrance
- Private Patio
- Low Service Charge
- Recently Refurbished
- Share of Freehold

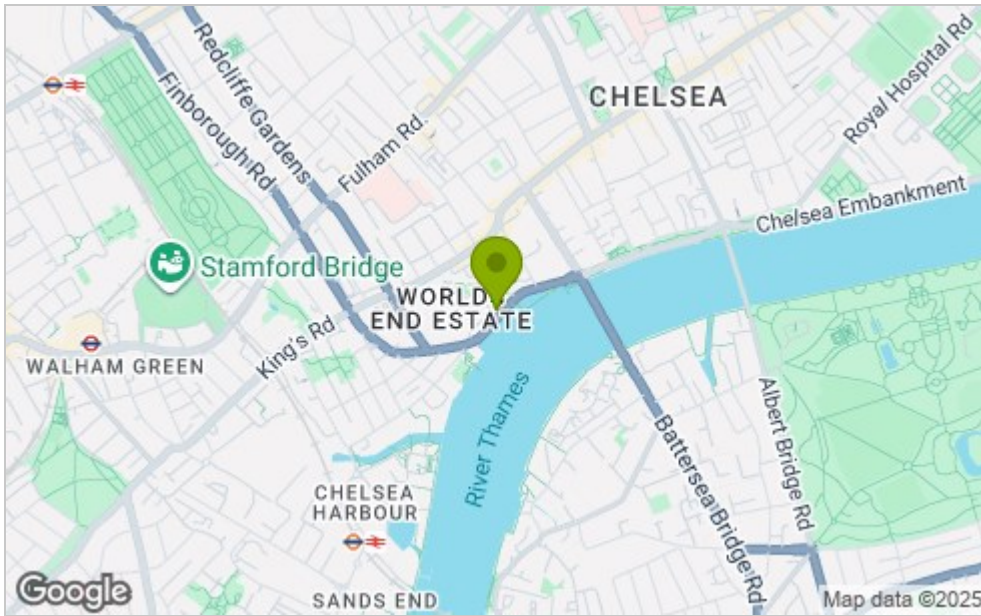




Floor Plan



Area Map



Viewing

Please contact our Chatterton Rees Office on 020 3780 0580 if you wish to arrange a viewing appointment for this property or require further information.

These particulars, whilst believed to be accurate are set out as a general outline only for guidance and do not constitute any part of an offer or contract. Intending purchasers should not rely on them as statements of representation of fact, but must satisfy themselves by inspection or otherwise as to their accuracy. No person in this firm's employment has the authority to make or give any representation or warranty in respect of the property.

Energy Efficiency Graph

| Energy Efficiency Rating | | Current | Potential |
|---|----|-------------------------|-----------|
| Very energy efficient - lower running costs | | | |
| (92 plus) A | | | |
| (81-91) B | | | |
| (69-80) C | | | 73 |
| (55-68) D | 59 | | |
| (39-54) E | | | |
| (21-38) F | | | |
| (1-20) G | | | |
| Not energy efficient - higher running costs | | | |
| England & Wales | | EU Directive 2002/91/EC | |
| Environmental Impact (CO ₂) Rating | | Current | Potential |
| Very environmentally friendly - lower CO ₂ emissions | | | |
| (92 plus) A | | | |
| (81-91) B | | | |
| (69-80) C | | | 73 |
| (55-68) D | 59 | | |
| (39-54) E | | | |
| (21-38) F | | | |
| (1-20) G | | | |
| Not environmentally friendly - higher CO ₂ emissions | | | |
| England & Wales | | EU Directive 2002/91/EC | |